

PatternFinder

Quick Start Guide



Data Analysis Software



STAR : ODDI

Logging Life Science



Table of Contents

1	Installation	3
1.1	Install	3
2	Projects	4
2.1	Create a Single File Project (SFP)	4
2.2	Create a Multiple File Project (MFP)	6
3	Transferring data from Star-Oddi application software's	8
4	Importing data from other systems	10
5	Help menu	12
6	Uninstall	12

This is the Quick start guide for PatternFinder (PF). The whole user manual is in the software under the **Help** menu and on Star-Oddi website: <http://star-oddi.com/online-support/user-manuals/>

1 Installing PatternFinder

1.1 Install

The installation program is on the PatternFinder (PF) CD. Insert the CD into your CD drive. To install the program, follow the InstallShield Wizard.

Follow the instructions on the screen. You will be prompted for a directory name for your PatternFinder program.

When the program is installed for the first time, the following window appears:

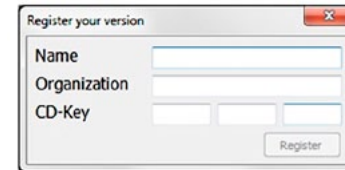


Figure 1.1 Registration

Insert your name, organization and the 12 character CD-Key which is provided on your CD holster. After you have registered, the program is activated.



2 Projects

2.1 Create a Single File Project (SFP)

Click the **Create a New Project** button on the main toolbar and the following window appears:

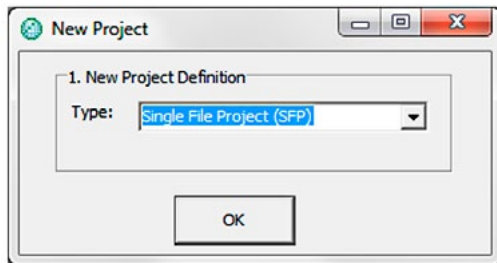


Figure 2.1 New Project

Select Single File Project. Note that you can also create a SFP by selecting **Project-SFP-New**. (see figure 2.2).

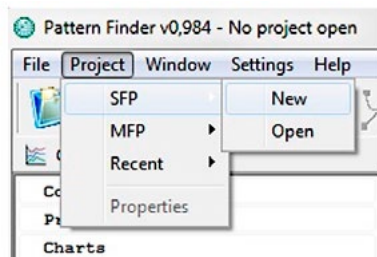


Figure 2.2 New SFP



Once SFP has been chosen the window in figure 2.3 appears. Click the browse button to select the DAT file.

The default name of the project is the name of the DAT file. The user can change the name, for example, Project 1, and enter a short description of the project.

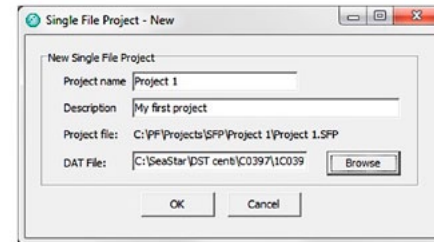


Figure 2.3 New SFP

Press OK and the name of the project as well as its location appears on the PF header (see figure 2.4). To the left you can see the project name in the Overview Window under **Projects** and the DAT file under **Charts**.

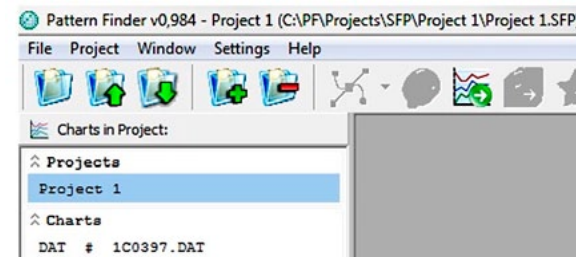


Figure 2.4 New SFP



2.2 Create a Multiple File Project (MFP)

Click the **Create a New Project** button and the following window appears:

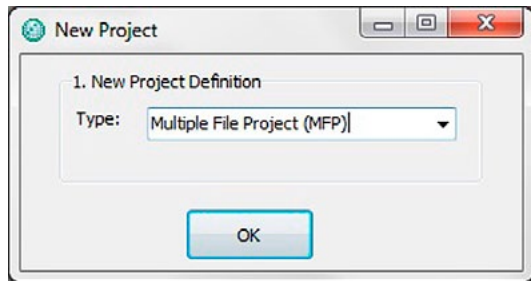


Figure 2.5 New Project

Select Multiple File Project (MFP). Note that you can also create a MFP by choosing **Project-MFP-New** (see figure 2.6)

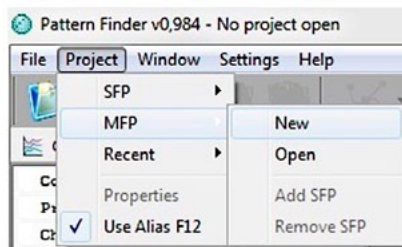


Figure 2.6 New MFP



Once MFP has been chosen the window in figure 2.7 appears. Enter a name and a short description of the project. Add the files you want to use in the project by clicking the **Add** button.

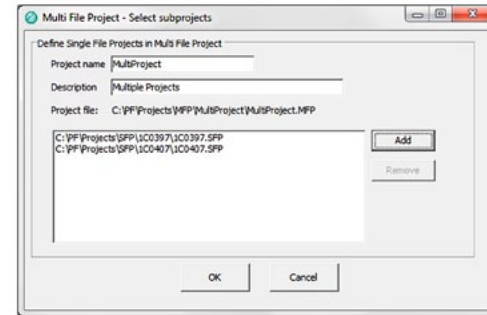


Figure 2.7 Select Subprojects

Press OK and the name of the project as well as its location appears on the PF header. To the left you can see the project name in the Overview Window under **Projects** and the DAT file under **Charts** (see figure 2.8).

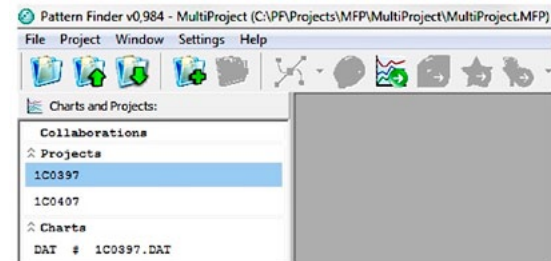


Figure 2.8 Overview Window



3 Transferring data from Star-Oddi application software's

To transfer data from your Star-Oddi application software do the following:

1. Launch PatternFinder
2. Launch the application software
3. Select a recorder in the application software
4. Click the PF button on the chart bar



When you click the PF button in the application software, PatternFinder will automatically open on the screen and the SFP window appears:

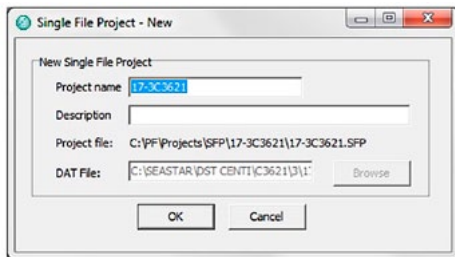


Figure 3.1 New SFP



The default Project name is the name of the recorder you transferred. You can change the name and enter a short description of the project.

Click OK and the project will appear on the Overview Window.

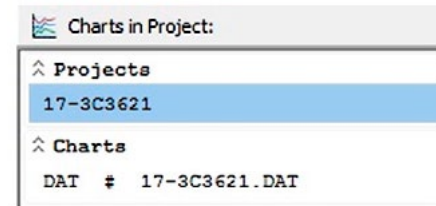


Figure 3.2 Overview Window

If you wish to transfer the data to MFP, you need to open an already created MFP or create a new one before transferring the data. After the data has been transferred, you can proceed with the project as described in chapter 2.

4 Importing data from other systems

Any text file (one measurement pr. line time series) can be imported by defining the data format. The user defines the measurement number column (optional), date/time column (optional) and the measurement value column(s). Date/time column can also be set afterwards in PF by entering start time and sampling interval.

Files that can be imported include:

- CSV files (from Excel)
- SFS files. Any single column data files.

The imported data is turned into a SFP, which can be worked with as DAT based SFPs.

Click on the **Import file to new SFP** button



The following window appears:

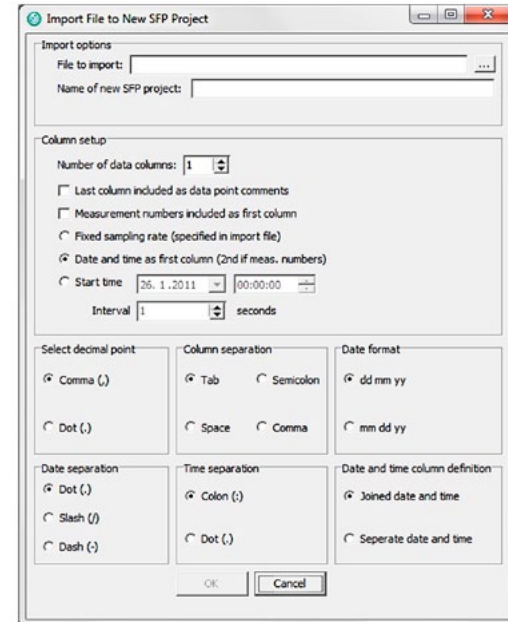


Figure 4.1 Import file to new SFP project

Browse for the file you want to import. Fill in the definition on how the data is organized in the file. Data should always be organized in columns.



5 Help menu

Tutorials

Select Tutorials to open the PatternFinder tutorials.

Case Studies

Select Case Studies to enter the Star-Oddi webpage to view the PatternFinder case studies.

User manual

Select User Manual to open the PatternFinder user manual.

Release notes

Select Release Notes to view a description of the latest features added to PatternFinder, the date when they were added and a reference to the chapter number of each manual where the additions can be found.

About

Select About for general information about PatternFinder

Check for updates

PatternFinder will automatically search the Star-Oddi website every time the program runs for the latest version of the software, User Manual, Trouble-Shooter and Release Notes.

This can be changed under Settings-Updates. You can also check for updates manually by choosing Help-Check for Updates.

6 Uninstall

To uninstall the program, do the following:

1. Click on the Start button in Windows.
2. Go to Settings and Control Panel.
3. Choose Add/Remove Programs
4. Choose PatternFinder and click on Change/Remove.

Note that data files created after installation will not be deleted even though the program is uninstalled.