

User's Guide for
Starmon 3-D tilt
Temperature Recorder and
SeaStar
Graphical Supporting Software

Star-Oddi
Address: Vatnagardar 14
104 Reykjavík
Iceland
Tel: +354 533 6060
Fax: +354 533 6069
E-mail: star-oddi@star-oddi.com
Web site: www.star-oddi.com

Table of Contents

1. Introduction	4
Hands on description.....	4
On-line measurement.....	5
2. Program Installation	6
Install.....	6
Uninstall.....	6
3. Preparation	7
Configuration of the communication port.....	8
4. Hardware Connections	9
Communication cable	9
Connecting	9
5. Using Starmon 3-D tilt - Tutorial	10
Step 1 - Start Program.....	10
Step 2 - Connect.....	10
Step 3 - Connect to the recorder.....	10
Step 4 - Set new measurement parameters	10
Step 5 - Start a new measurement sequence.....	11
Step 6 - Retrieve data	12
Step 7 - Disconnect	12
Step 8 – View data.....	12
6. View Data	13
Open Data.....	13
Import.....	14
Buttons	14
Using the mouse	15
The View Menu	16
Data Trend and Table	16
Recorder Information (RIT)	16
Recorder Calibration Information (RCI).....	16
Recorder Download Information (RDT).....	16
Measurement Download Definition (MDT)	16
Measurement Information (MIT)	16
Conversion Information (CIT).....	16
Out Of Range (OOR)	17
Binary Data (DAB)	17
Converted Data (DAT)	17
Opening data in Excel	17
7. Printing	18
Orientation	18
Margins.....	18
Move.....	18
Detail.....	18
8. Settings	19
Directories	19
Default SeaStar path structure.....	19
User defined paths.....	20
Preferences	20
Units.....	20

Data File Format	21
Measurement Interval	21
Connection	22
Perform CRC test when retrieving RID	22
Perform clock-drift test after retrieving RID	23
Automatic data retrieval upon connection	23
Retrieve Data	23
Retrieve number of data	23
Out Of Range	24
Decimal values	24
Unit values	24
Time Synchronize Data (TSD).....	25
Chart	26
Time axis	26
Value axis.....	26
Title	27
9. Multiple Intervals.....	28
10. Reconvert Data.....	30
11. Recorder Modes.....	32
PC Mode	32
Sleep Mode	32
Measurement Mode	32
12. Memory Organization	33
Appendix.....	34
Directories and files	34
Troubleshooting.....	39
Connecting to the recorder.....	39
Retrieving data from the recorder	41

1. Introduction

The *Starmon 3-D tilt* is a three directional tilt angle measurement recorder.

The recorder is a four-channel measurement device, measuring temperature, and relative angle movements of the housing with reference to the earth gravity.

The recorder is measuring the gravity movements in three directions perpendicular to each other. The X-axis is along the longitude central axis of the housing, the Y-axis is in the same plane positioned in a 90° angle to the X-axis and the Z-axis is a 90° angle to both X and Y -axis.

All axis have a measuring range of approximately 180°, but the accuracy is greatly reduced at both ends of the measurement range. Therefore the specified valid measurement range is [10°- 170°].

It should be noted that if the recorder's housing is tilted more than +/-90° from origo, then values from the tilt-sensor decline again. For example a 200° angle position is read as a 160° angle position. This is true for all directions.

Another thing that should be taken into account, is that the tilt sensor is fundamentally an accelerometer and fast movements can give rise to erroneous tilt measurements.

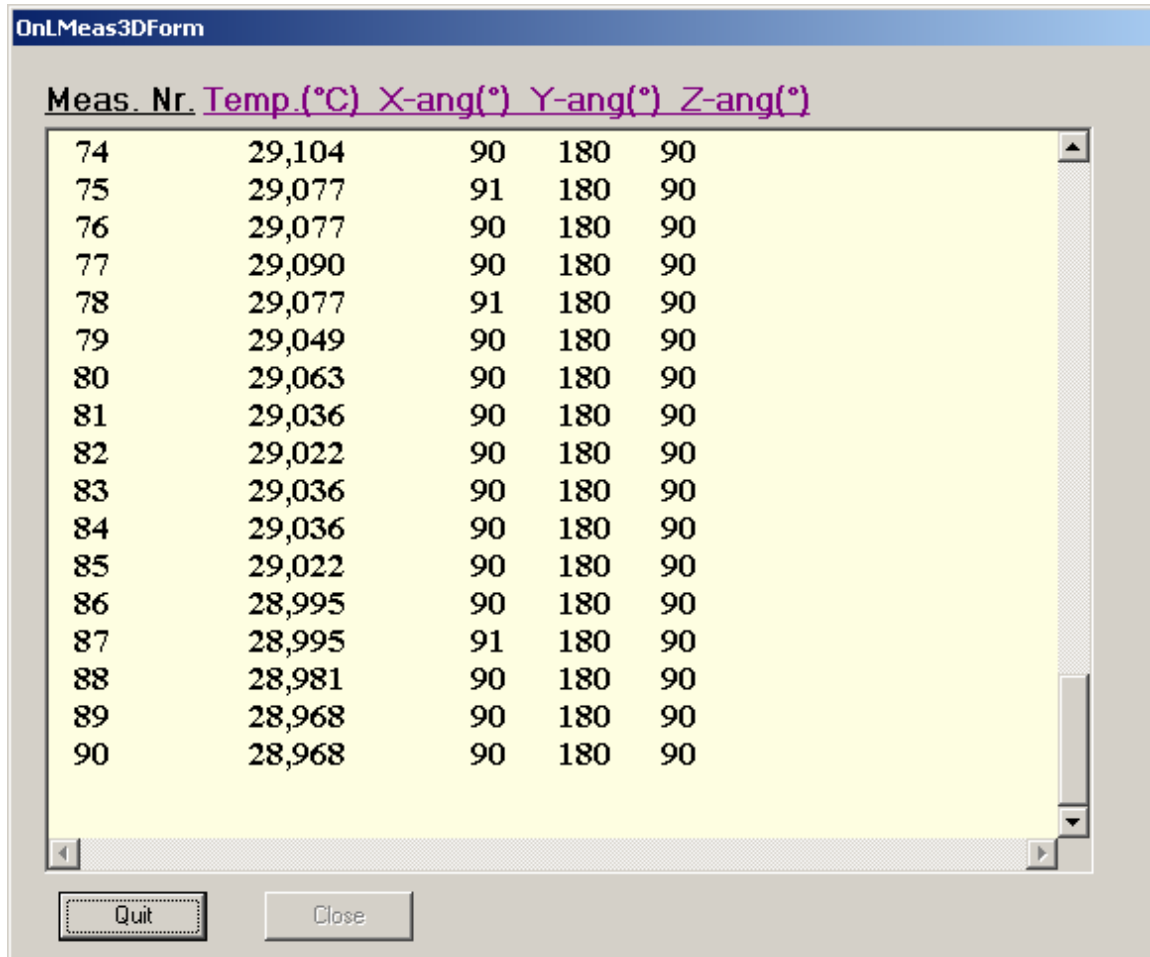
Starmon 3-D tilt is calibrated at Star-Oddi, and each recorder has its calibration constants stored in its internal memory. It is recommended that the recorder be recalibrated every 1-2 years.

Hands on description

When positioning the *Starmon 3-D tilt*, try to set the housing in such a position that two of the axis are positioned as close to central point (origo) as possible, which is 90°. So either X and Y, X and Z or Y and Z, are set to 90° angle, to ensure maximum range. If the recorder is set to start measuring in a way that such a reading is acquired in a fixed position, that reading can be used to define a correction offset, as to achieve a correct central point/origo.

On-line measurement

Connect to the recorder by choosing the **Recorder** menu and **Connect** command. Then choose the **Settings** menu and **OnLine** command. A window appears on the screen that gives measurements in real time:



Meas. Nr.	Temp.(°C)	X-ang(°)	Y-ang(°)	Z-ang(°)
74	29,104	90	180	90
75	29,077	91	180	90
76	29,077	90	180	90
77	29,090	90	180	90
78	29,077	91	180	90
79	29,049	90	180	90
80	29,063	90	180	90
81	29,036	90	180	90
82	29,022	90	180	90
83	29,036	90	180	90
84	29,036	90	180	90
85	29,022	90	180	90
86	28,995	90	180	90
87	28,995	91	180	90
88	28,981	90	180	90
89	28,968	90	180	90
90	28,968	90	180	90

Figure 1.1

The recorder starts the online measurements and presents temperature and X, Y and Z axis in a automatically updated window as in fig. 1. Now the recorder can be rotated and turned to find the ideal position.

Using online measurement is a good way of finding the initial position of the recorder. As can be seen in the figure above, the 90° angle has been found for two of the axis, and hence the third axis shows 180°. After the position is found, hit the 'Quit' button and the measurements are collected and displayed in graphics and tables.

SeaStar is supporting software for the *Starmon 3-D tilt* temperature recorder. *SeaStar* can run under Win95, Win98, Win 2000, WinXP and WinNT.

2. Program Installation

This chapter describes how to install and uninstall the *SeaStar* software on your PC computer.

Install

The installation program is on the *SeaStar* CD. Insert the CD into your compact disc drive. To install the program, follow the automatic InstallShield Wizard.

Follow the instructions on the screen. You will be prompted for a directory name for your *SeaStar* program.

The user is encouraged to make a shortcut to the desktop for the *SeaStar* program.

To run the program after installation, do one of the following:

1. Click on the Start button and choose 'Programs', and then 'SeaStar'.
2. Double click on SeaStar.exe from Windows explorer or My Computer.
3. Double click on the *SeaStar* icon at the desktop (if a shortcut has been made to the desktop).

Uninstall

To uninstall the program, do the following:

1. Click on the Start button in Windows.
2. Go to Settings and Control Panel.
3. Choose Add/Remove Programs.
4. Choose *SeaStar* and click on Change/Remove, and 'Yes to all'.

3. Preparation

This chapter describes preparations that should be carried out before connecting to the recorder.

Start *SeaStar* and the following window appears.

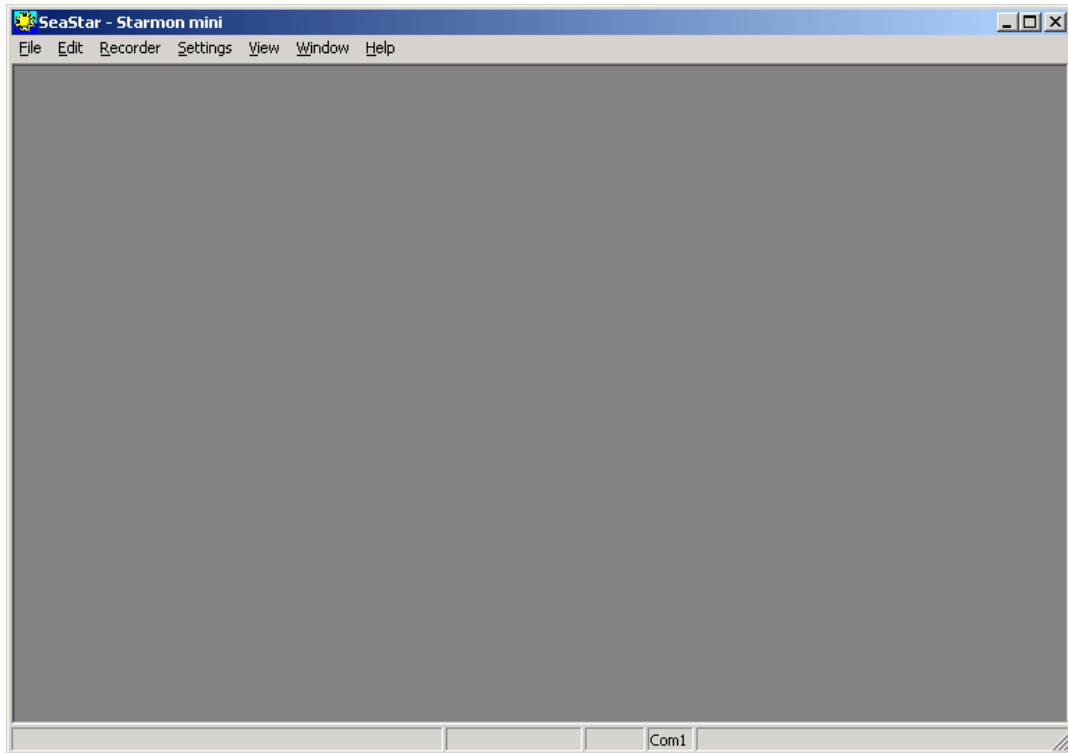


Figure 3.1 *SeaStar main window*

Configuration of the communication port

It is necessary to define which serial port on your PC computer you will use for the communication cable. This is done in the following way:

1. Choose the **Communication** command in the **Settings** menu.
The **Communication definition** dialog box appears.
2. Select a serial port for communications.
3. Choose the **OK** button.

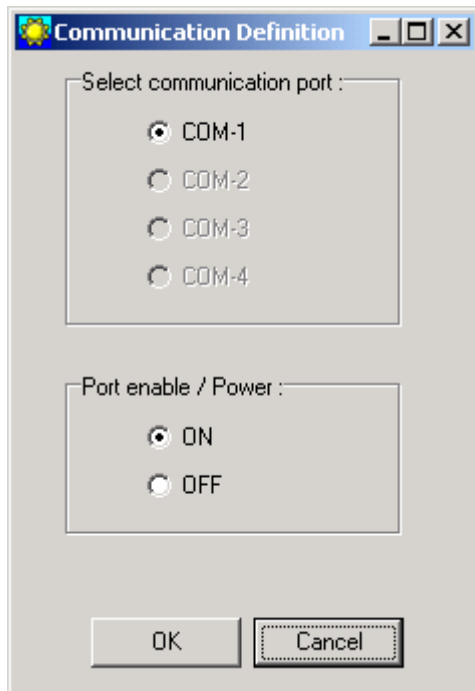


Figure 3.2 Communication port configuration

Before connecting to the recorder, it is important that the clock on the PC computer is correct. This is important since the recorder automatically downloads the PC clock settings.

The user is also advised to view the **Settings** menu, to insure that the data directory and data format are according user's requirements. The **Settings** menu is described in detail in chapter 9.

4. Hardware Connections

This chapter provides details concerning the communication cable and how to connect the cable to the recorder.

Communication cable

The *Starmon* communication cable is an RS-232C compatible cable, specially designed to communicate with *Starmon* recorders. An optional USB plug is also available. The cable will feed power to the recorder while communicating with the PC.

If the battery inside the recorder is dead, the PC and cable are still able to connect to the recorder and retrieve data.

Connecting

Unscrew the end cap on *Starmon 3-D tilt*. The socket becomes accessible as shown in the following figure:

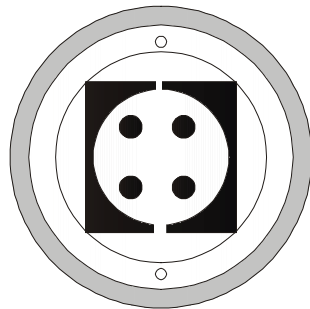


Figure 4.1 Connector socket under the cap

Connect the communication cable between the serial port of the computer and the socket inside the recorder.

When data upload is completed and/or new measurement settings have been downloaded to the recorder, the user should disconnect the recorder and close the housing. It should be adequate to tighten the cap firmly by hand. Occasional lubrication of the o-ring seal is recommended.

5. Using Starmon 3-D tilt - Tutorial

This chapter guides users through the process of utilizing *SeaStar* to set up *Starmon 3-D tilt* prior to recording and data retrieval.

Step 1 - Start Program

Start *SeaStar* as described in chapter 2. Remember to carry out the software preparation outlined in chapter 3.

Step 2 - Connect

Unscrew the end cap on *Starmon 3-D tilt*. Connect the communication cable between the serial port of the computer and the socket inside the recorder.

Step 3 - Connect to the recorder

Choose the **Recorder** menu and the **Connect** command. A window appears with information on the recorder mode, example:



Figure 5.1 Connecting to the recorder

Press **OK**. The Recorder is now on-line, as indicated at the bottom of the *SeaStar* window.

Step 4 - Set new measurement parameters

(If the recorder has already been set up to record data and you want to retrieve data, go directly to **step 6**).

Choose the **Edit** menu and the **New Measurement Sequence Definition** command.

Select the start time of recordings (**date-month-year, hours-minutes**). Set the sampling interval (**hours-minutes-seconds**).

If the user wants to program many recorders with the same sampling interval and start time, it is recommended to select **Multi mode**. By choosing **Multi mode**, the settings are fixed; giving each recorder connected to thereafter, the same settings. The recorders that are connected to, following the first recorder, automatically get the same settings as the first recorder. This saves time in the programming process.

After the settings have been selected, press the **OK** button.

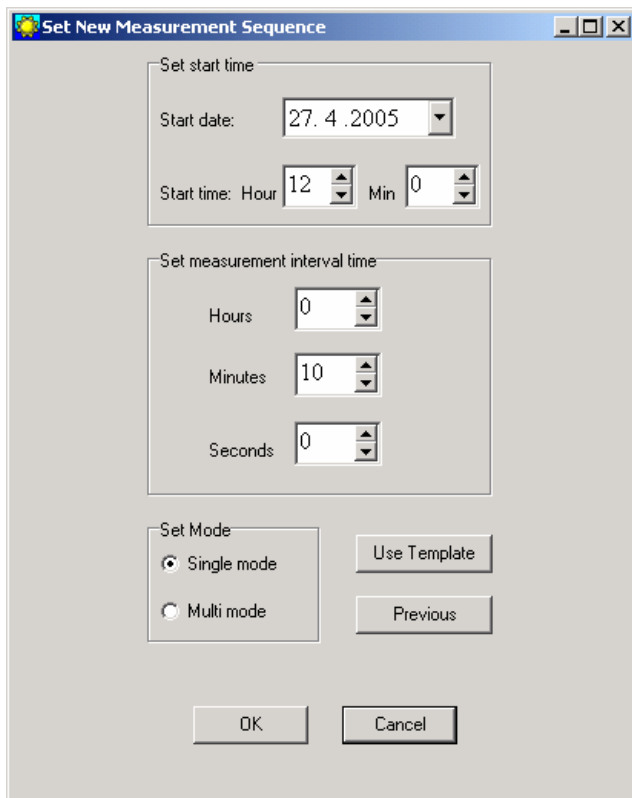


Figure 5.2 Measurement sequence definition

Step 5 - Start a new measurement sequence

To set the recorder in Measurement Mode (start recording), choose the **Recorder** menu and **Start New Measurement Sequence** command. A window appears on the screen in order to verify the settings you wish to download to the recorder:

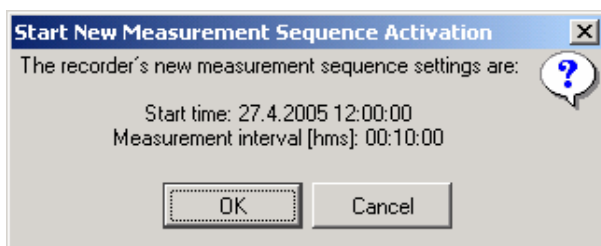


Figure 5.3 Start New Measurement Sequence

Press **OK** and the recorder will be set in Measurement Mode.

Step 6 - Retrieve data

Choose the **Recorder** menu and the **Retrieve Data** command. Data will be uploaded from the recorder and presented in graphical and tabular form. With default settings, *SeaStar* automatically creates a sub-directory in the 'Seastar' directory, named 'Starmon 3-D tilt'. In the 'Starmon 3-D tilt' directory, a directory named after the recorder's serial number (Tnnnn) is created. All files related to the recorder are automatically saved in the serial number directory. The default data directory can be viewed in the **Settings** menu, and **Directories**. The user has the option to define a new data directory path if desired.

The data is retrieved in a non-destructive manner. This means that you can repeatedly read the data without erasing it from the memory. Each time data is retrieved, a new file will automatically be created. The name of the data file consists of the measurement sequence number and the serial number of the recorder. The recorder cannot be loaded with new settings if it contains data that has not been retrieved. This is a safety feature which prevents data from being accidentally lost.

After data retrieval, the recorder can be set up to measure again, or it can be put into Sleep Mode. While the recorder is in Sleep Mode, almost no power is depleted from the battery. When the recorder is on-line, the user can put it into Sleep Mode by disconnecting the recorder, or by choosing the **Recorder** menu, and **Put Recorder in Sleep Mode**. To set the recorder in Measurement Mode, repeat steps 3, 4 and 5.

Step 7 - Disconnect

Disconnect the cable and close the housing. The cap should be tightened firmly. Occasional lubrication of the O-ring seal is recommended.

Step 8 – View data

When data is retrieved from the recorder, a new file will automatically be created and opened in graphical and tabular form. To open existing data files on the computer, choose the **File** menu, **Select Recorder** command, and then the **Select Measurement** command. When a data file has been opened, a new window appears with the data shown as a chart and a table. The next chapter will describe in detail how to view and process data.

6. View Data

This chapter describes how to open a data file and the options available in *SeaStar* for viewing the data.

Open Data

To open an existing data file that has already been retrieved, do the following:

1. Choose the **File** menu and the **Select Recorder** command. When a recorder has been selected, its serial number will be displayed in the blue top bar of the software.
2. Select the data file by choosing the **File** menu and the **Select Measurement** command.

The name of the data file consists of the number of times the recorder has been set up to measure plus the serial number of the recorder. When the data file (.mid) has been selected, the chart and data tables are opened. The following figure shows a chart and data table which have been opened:

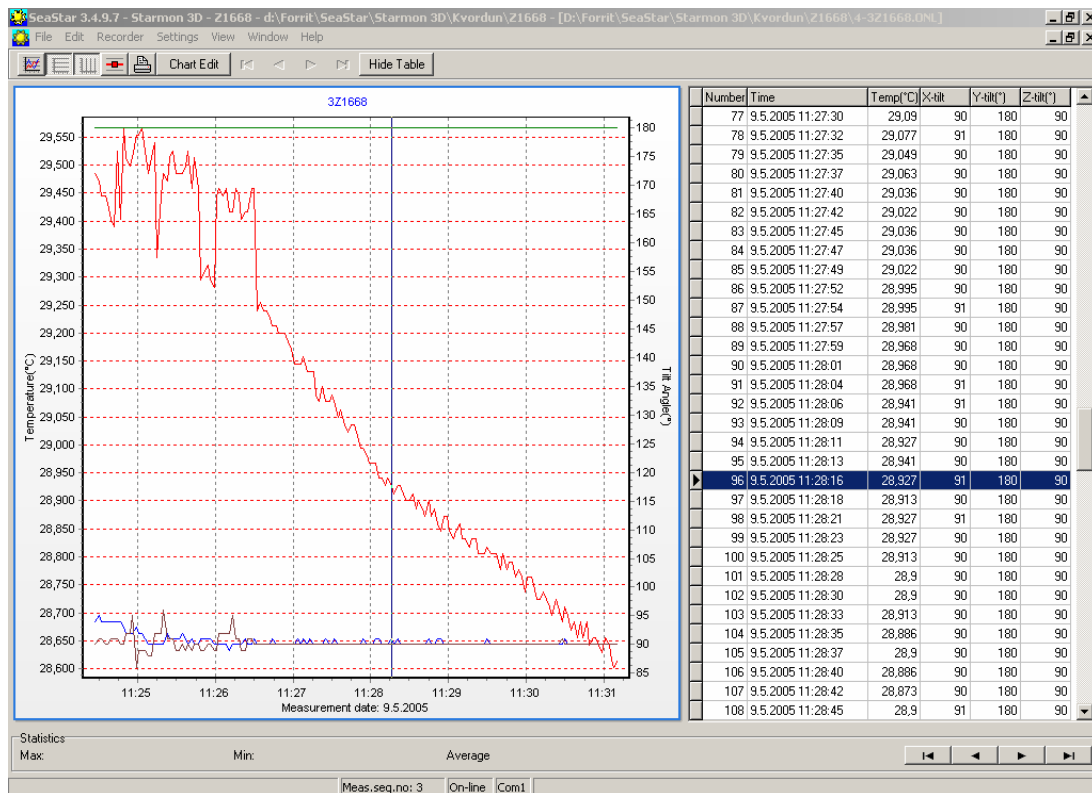


Figure 6.1 Chart and data table of an open file

At the bottom of the *SeaStar* window you can view the measurement sequence number, which tells you the number of times the recorder has been set up to measure.

Import

Data files from other recorders than *Starmon* can be imported into *SeaStar* and viewed as charts and tables. The imported file must be a text file with the extension DAT, and with *SeaStar*'s conventional DAT file structure. See more about data files and headers in the Appendix.

Buttons

When the chart is opened, buttons related to the chart are displayed.



Active Series List

This button can be useful when working with a multi-sensor recorder, in order to select which parameters to display in the chart. For example, when working with a chart displaying temperature and depth recordings, the user can hide the depth measurements.



Horizontal/Vertical Gridlines

These two buttons give the option of hiding/displaying the horizontal/vertical gridlines in the chart.



Data Point Marker

This button gives the option of displaying/hiding data points in the chart.



Print

The chart can be printed. Please see chapter 8 for more details.



Chart Edit

By clicking this button, the following window appears:

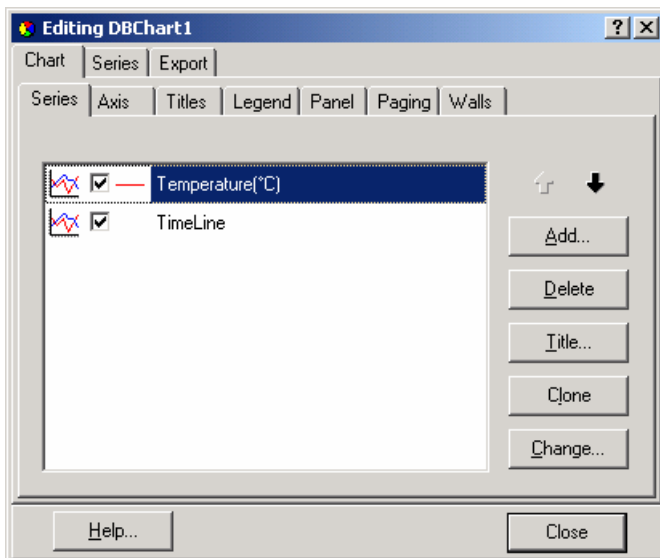


Figure 6.2 Editing Chart

This button gives several options regarding the look of the graph. The axis can be defined (max. and min.), titles and legend can be set visible. Under 'Panel' the color of background, borders and gradient can be selected. Under 'Walls - Back' the colors and gradient of the graph itself can be selected. The 'Visible' option must be enabled to activate the features. The graph can be exported in formats as jpg, gif, bitmap, metafile, pdf, htm and svg.



Hide/Show table

The data table can be either displayed or hidden using this option.

Using the mouse

Vertical line

Click once on a data line in the chart, and a vertical line appears. The maximum and 3-D tiltmum temperature values are now shown. By clicking on the line and holding the left button on your mouse down, the line can be dragged through the chart and the data table will scroll along with the position of the line.

Zoom

The chart can be zoomed in on by holding down the left button of the mouse, and using the cursor to create a box to the right, around the desired area to zoom in on.

Scroll the chart

The chart can be scrolled upward, downwards and to the sides, by holding down the right button of the mouse and moving the cursor in the desired direction.

Go back to initial view

To go back to the initial view of the chart, simply hold down the left button of the mouse and make a box **to the left** with the cursor. The position of the box on the chart is irrelevant.

Change the axis

By double clicking on the X and Y-axis, the measurement time and temperature range can be changed.

Change the title

To change the title of the chart, double click on the title of the chart.

The View Menu

When a recorder has been selected, the files in the **View** menu can be opened.

Data Trend and Table

This view is automatically selected when data is retrieved or a data file is opened. If the chart is closed, but a recorder has been selected, this command can be selected to view the chart. The software will open the latest chart that was viewed for that recorder.

Recorder Information (RIT)

This is a text file containing basic information about the recorder, serial number, production date, estimated battery life etc.

Recorder Calibration Information (RCI)

This text file contains information about the calibration constants of the recorder, calibration range of the parameters. The range is both showed as decimal values (DV) and unit values (UV). The survival depth of the recorder is also shown.

Recorder Download Information (RDT)

This text file contains information about the measurement sequence that was last downloaded into the recorder, including the start time, sampling interval and the measurement sequence number.

Measurement Download Definition (MDT)

This text file contains information on data downloaded into the recorder for the measurement file being viewed, including the start time and sampling interval.

Measurement Information (MIT)

This text file contains information concerning the measurement upload time, start date, start time and number of measurements in the measurement data file.

Conversion Information (CIT)

This text file contains conversion information on the units and the data file format.

Out Of Range (OOR)

This text file shows the number of measurements recorded that were outside the calibration range.

Binary Data (DAB)

This file contains raw data of the measurements in the data file. Calibration files are not calculated into the data.

Converted Data (DAT)

This is the text file for the converted data. The DAT file as well as the other text files can be opened in other programs (Excel, Notepad, Word etc.).

More about files in the 'Appendix'.

Opening data in Excel

When retrieving data, the *SeaStar* software automatically creates a text file with the data, called *.DAT. This text file can be opened in Excel and in other programs.

Under the 'Settings' menu, 'Preferences – Data File Format', the default factory settings is set to 'joined date and time'. If this option is not disabled, the following is performed, for opening data in Excel:

1. Excel is started.
2. The *.dat file is found from 'File/Open'.
3. Excel comes up with the 'Text import wizard'. This is a three step process:
 - a) No changes should be made in first step, so hit the next button.
 - b) 'Text qualifier' should be set as 'None'. Hit the next button.
 - c) Column 2, that is date and time, is set as 'Text'. Hit the finish button.
4. You can now create the graph with columns B and C.

7. Printing

All charts and text files can be printed from the *SeaStar* software. Choose the **File** menu and the **Print** command. If a chart is in the active window, the following dialog box appears:

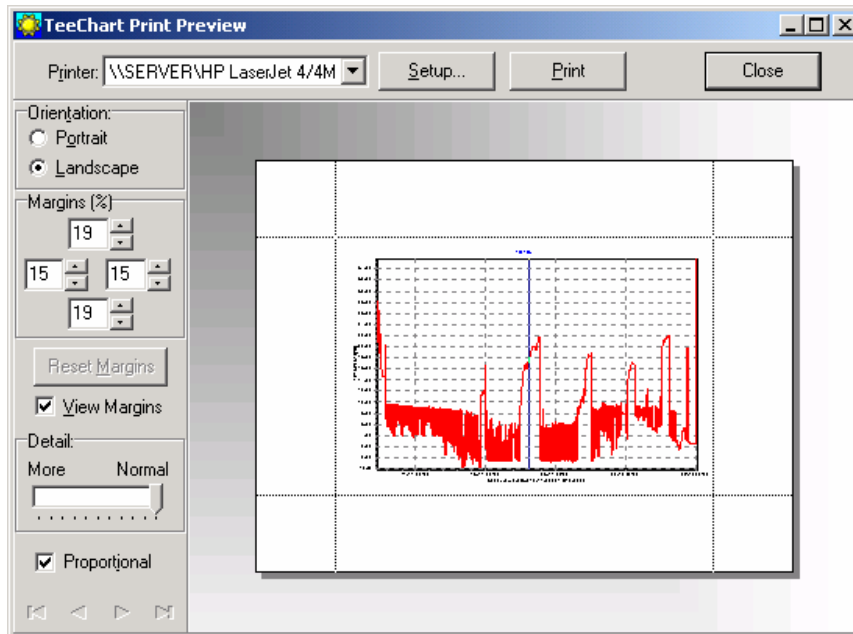


Figure 7.1 Print dialog box

Orientation

The chart can be printed in either portrait or landscape format.

Margins

By changing the margins, the chart's length and width can be re-scaled. The margins can be varied by either changing the numbers given for the left, right, top and bottom margins, or by moving the margin lines with the mouse by pressing and holding the left button as the lines are dragged.

Move

When the cursor is located on the chart, a hand becomes visible. By clicking on the graph and holding down the left button of the mouse, the graph can be moved around the page to a desired position.

Detail

The size of horizontal and vertical gridlines as well as the texts on the X and Y-axis can be re-scaled by using the scroll bar. The number of gridlines is increased when the bar is moved to the left.

8. Settings

This chapter describes the options in the **Settings** menu. These settings are automatically saved when exiting the program.

Directories

The path definition can be set as **Default SeaStar path structure** or **User defined paths**. Choose the **Settings** menu and the **Directories** command. A dialog box appears:

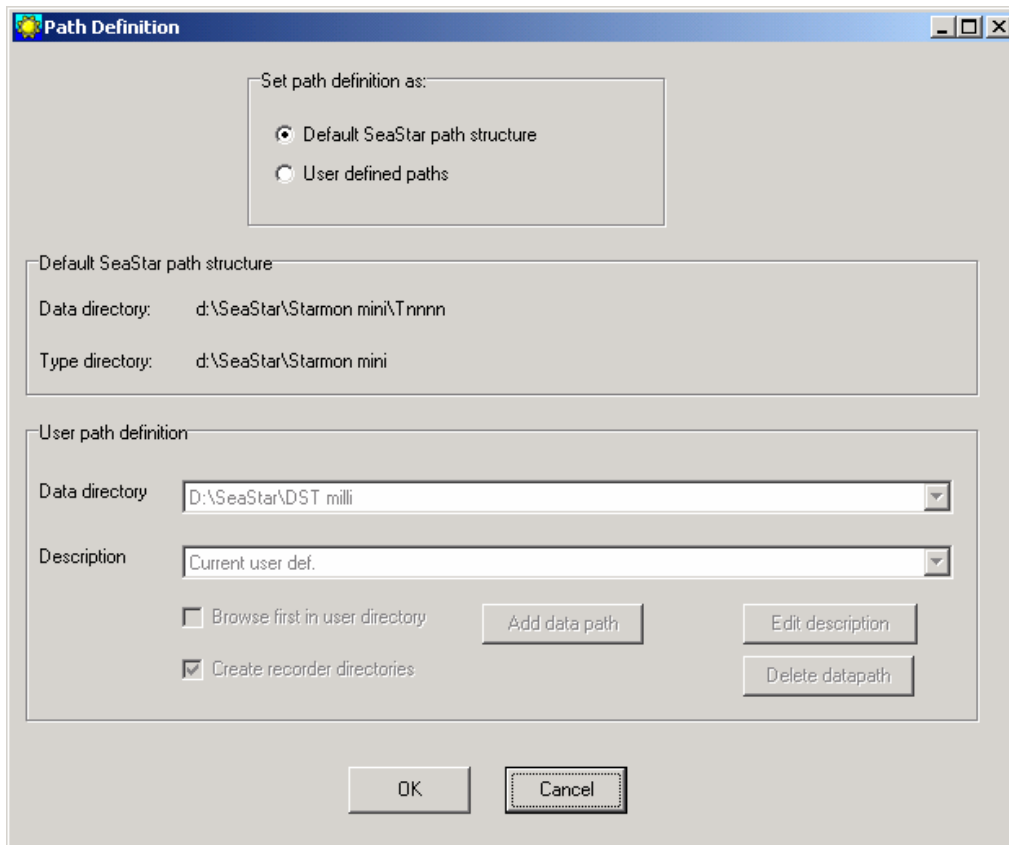


Figure 8.1 Directory path definition

Default SeaStar path structure

With default settings, *SeaStar* automatically creates a 'Starmon 3-D tilt' type directory in the 'SeaStar' directory that was created when the software was installed on the computer. After connecting to a recorder, another directory is automatically created in the 'Starmon 3-D tilt' directory, which is named after the serial number of the recorder. All data files and other files related to that recorder are stored in this 'serial number' directory. Each *Starmon 3-D tilt* recorder has its own data directory.

User defined paths

If this option is selected, the **User definition** data directory becomes active. The data path/directory can be defined by the user. For defining a path on the network, the particular drive must be mapped (under Windows Explorer) in order to browse for the drive under 'Add data path'.

Create recorder directories

This option is default on, and means that a recorder type and serial number directory is created for every recorder connected to.

Browse first in user directory

With default off, the user is first directed to the path where *SeaStar* was installed, to look for the INI file for a particular recorder. If this option is enabled, *SeaStar* will start looking for the INI file in the user-defined directory. More information on files and their structure can be found in the Appendix.

Preferences

Units

By choosing the **Settings** menu, the **Preferences** command, and **Units**, a dialog box appears:

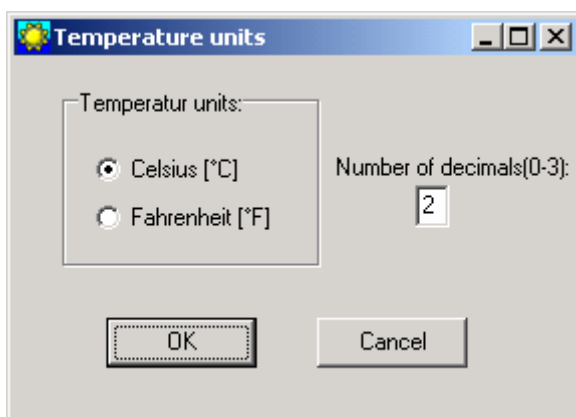


Figure 8.2 Temperature unit dialog box

Select units

The user defines whether degrees Celsius or Fahrenheit are used as a unit for temperature measurements.

Select number of decimals

The user defines the number of decimals for temperature values displayed in *SeaStar* and for text files that are created.

Data File Format

By choosing the **Settings** menu, the **Preferences** command, and **Data File Format**, a dialog box appears:

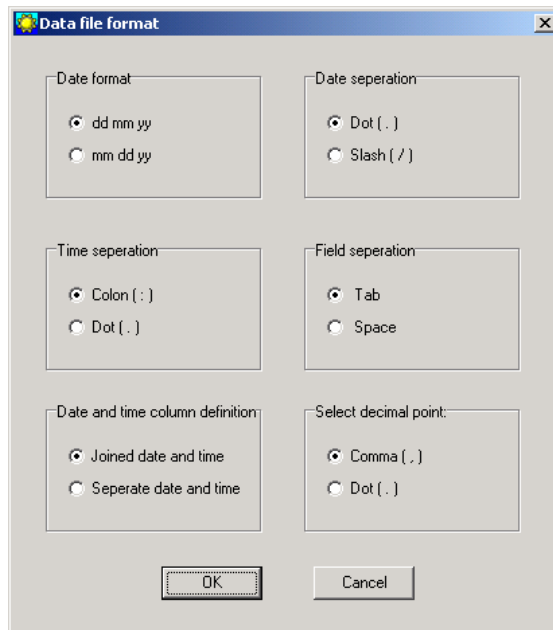


Figure 8.3 Data file format dialog box

Date format

The user defines whether the date should be shown as dd mm yy (day, month, year), or mm dd yy (month, day, year).

Date separation

The user defines whether a dot or a slash should be used to separate the date.

Time separation

The user defines whether a colon or a dot should be used for the time separation.

Field separation

For the text files created, the user defines whether a tab or a space should be used to separate the fields.

Date and time column definition

If data is to be exported to other programs, it is recommended that the date and time be joined in one column.

Select decimal point

The user defines whether a comma or period is used for the values displayed in *SeaStar* and for text files that are created.

Measurement Interval

The default setting in the software is set to 'Single interval', as most users utilize. By choosing 'Multiple intervals' the software enables programming of several different

sampling intervals, enabling memory saving efficiency. By choosing the **Settings** menu, the **Preferences** command, and then **Sampling Intervals**, the following dialog box appears:

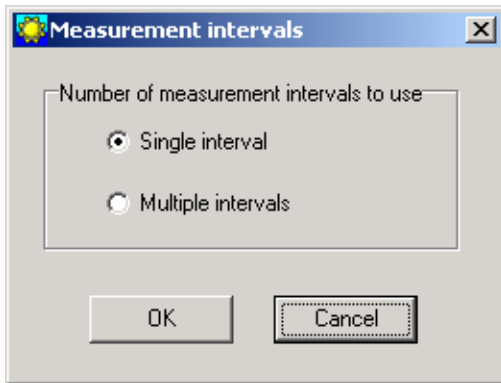


Figure 8.4 Measurement intervals

By choosing 'Multiple intervals' the effects are shown in the dialog box that appears when you choose the **New Measurement Sequence Definition** command under the **Edit** menu. With 'Multiple intervals' the user can define two different sampling intervals, and number of measurements within each interval. The recorder can, for example, be programmed to switch between a narrow and a wider sampling interval. This may be convenient for saving memory space in between. More about multiple intervals in chapter 10.

Connection

Choose the **Settings** menu and the **Connection** command. A dialog box appears:

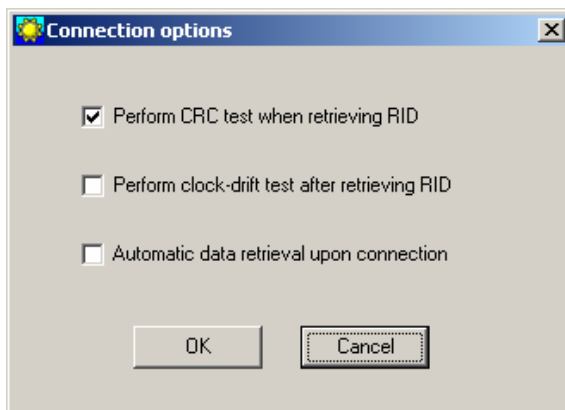


Figure 8.5 Connect and retrieve data options

Perform CRC test when retrieving RID

The CRC test is a safety check performed by the software when retrieving Recorder Information Data (RID). If the CRC test is not successfully carried out, it means that some

errors have occurred in the transfer of files or constants, between the recorder and the computer. If a CRC test failure occurs, the user is notified. Normally, this option should always be selected.

Perform clock-drift test after retrieving RID

The software can calculate the clock drift that has occurred in the recorder. Before connecting to the recorder for setting it up to measure, the PC clock must be accurately set. After the data-recording period and before connecting to the recorder for retrieving data, the PC clock must again be accurately set. That is because clocks in PC computers tend to drift. The clock drift information can be viewed in the RIT file.

The drift is calculated in seconds as the difference between the recorder clock and the PC clock, i.e. recorder clock minus PC clock. If the drift is negative, the recorder clock is lagging, and if positive, the clock drift is leading. The drift is also calculated in ppm (parts per million), which is intended for finding time values in different units (hrs/min/sec) at various times in the measurement period.

For example the drift in the recorder one day from start of measurements is in hours: $24/1,000,000 \times \text{ppm}$, and in seconds: $24 \times 60 \times 60/1,000,000 \times \text{ppm}$.

Automatic data retrieval upon connection

By enabling this option, the software will automatically check for data in the recorder upon connection.

Retrieve Data

Choose the **Settings** menu and the **Retrieve Data** command. A dialog box appears:

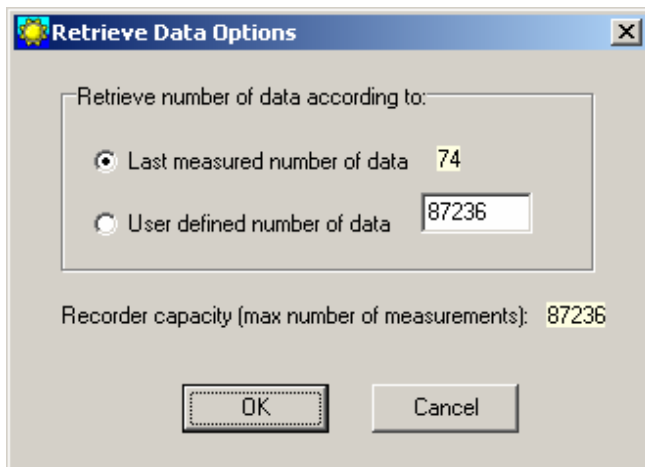


Figure 8.6 Retrieve Data Options

Retrieve number of data

With default settings, the software retrieves the last measurement sequence recorded. The user has the option of retrieving older data that is still in the recorder's memory. By choosing the **User defined number of data**, the number of measurements retrieved from the recorder can be set. The total memory capacity of the recorder is 87,236 measurements.

Out Of Range

If measurements are outside the calibrated range, they may seem inaccurate. The out of range measurements are shown in the OOR file (View – Measurement Data – Out Of Range Data). The min. and max. calibration points are given in the RID file, and in this case it should be sufficient to go directly to 'Edit – Reconvert Definition – Data Definition', and choose 'RID values' under 'Out of range decimal values settings'. Data is then reconverted by choosing 'File – Reconvert Data'. More about reconvert in chapter 10.

The user can also define the ranges. Choose the **Settings** menu, **Out Of Range - UV and DV** definition command. A dialog box appears:

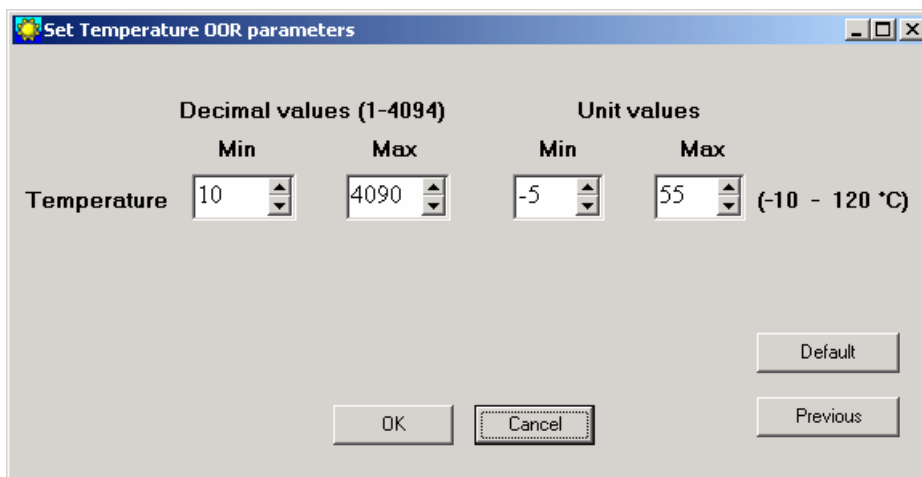


Figure 8.7 Set Temperature Out Of Range (OOR) Parameters

Decimal values

Decimal Values (DV) are raw measurements, sometimes referred to as binary data. The decimal value is between 0 and 4095, which is the range for the 12 bit AD converter. The decimal values are the recorder's calibration range. The user should not define the decimal value range, unless he has obtained these values for that particular recorder from Star-Oddi.

Unit values

The decimal values are converted to Unit Values (UV), for example a decimal value of 2000 could give 20°C. The user can select a specified range for temperature and pressure. If unit values in the data are outside the measurement calibration range of the recorder, the user has the option to set a max. and min. range for these unit values.

After selecting the unit value ranges and pressing the OK button, the following window appears:

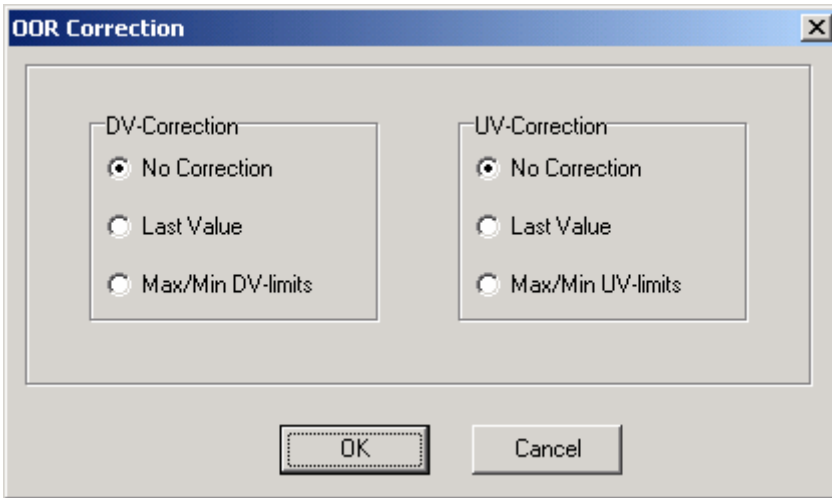


Fig. 8.8 Out Of Range (OOR) Correction

If no values have been selected for the Decimal Value (DV), no correction should be selected. If Unit Values (UV) ranges were specified, the user has the option to change the out of range measurements to the last value that was recorded before the out of range measurement was recorded, or have it according to the max/min unit value as specified earlier. In this case the software will know if the value is under the 3-D tiltmum or maximum limit. After the correction has been made, the data needs to be reconverted under File – Reconvert Data, and data will be changed accordingly.

Time Synchronize Data (TSD)

Choose the **Settings** menu, **TSD** definition command. A dialog box appears:

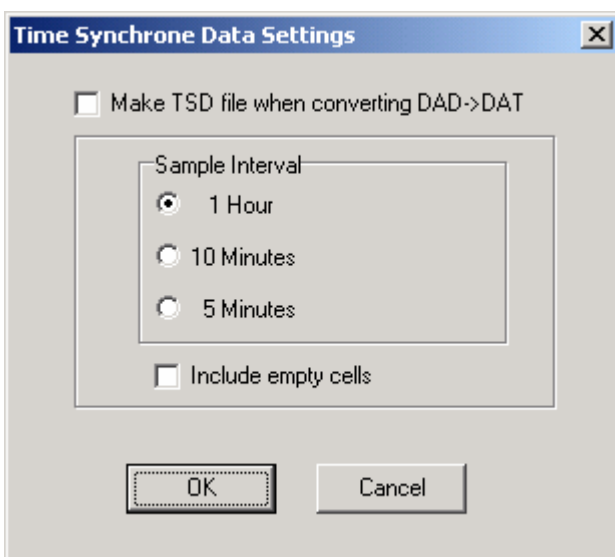


Fig. 8.9 Time Synchronise Data Settings

If the user wants to time synchronize two or more data files, it is possible to select three options: 1 hour, 10 minutes, or 5 minutes. The restriction is that the sample interval selected must be greater than the initial interval, and it must also be dividable by the initial interval. For example, if the initial interval was 15 minutes, only the 1 hour option can be selected for time synchronising.

If the 'Include empty cells' is enabled, the data tables will be empty for those measurements in the original file that are not to be shown.

If the user wants to activate this feature, the 'Make TSD file when converting DAT-DAT' must be enabled. For changing the current measurement file with one of the three intervals, the data must be reconverted by 'File – Reconvert Data'.

Chart

Time axis

To change the time scale of the chart, choose the **Settings** menu, the **Chart** command, and **Time-Axis Settings**. A dialog box appears:

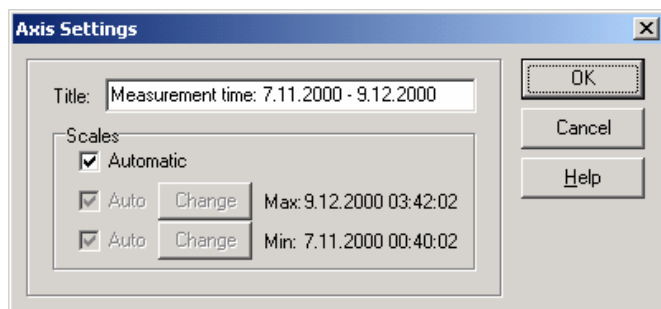


Figure 8.10 X-Axis settings dialog box

By disabling the Automatic option, the 3-D tiltmum and maximum time values become active. By clicking on the **Change** buttons for the maximum and 3-D tiltmum values, the time range can be specified. By enabling the Automatic option, the measurement time will go back to the initial range.

Value axis

To change the scale settings for the value axis, double click on the Y axis scale, or choose the **Settings** menu, the **Chart** command, and **Temperature-Axis Settings**. A dialog box appears:

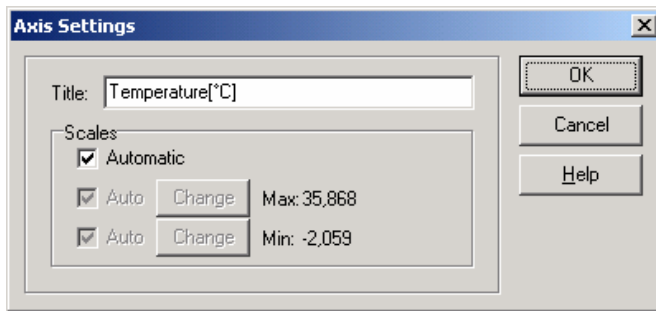


Figure 8.11 Y-Axis settings dialog box

By disabling the Automatic option, the 3-D tiltmum and maximum measurement values become active. By clicking on the **Change** buttons for the maximum and 3-D tiltmum values, the temperature range to be shown on the chart can be specified. By enabling the Automatic option, the temperature will go back to the initial range.

Title

To change the title of the chart choose the **Settings** menu, the **Chart** command, and **Title**. A dialog box appears:

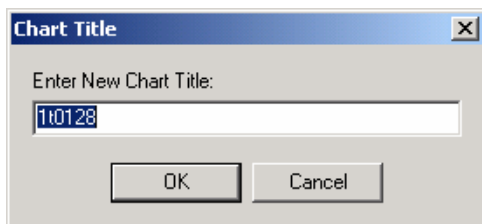


Figure 8.12 Chart title dialog box

The chart is automatically assigned the data file number as a chart title. To change the chart title, enter a new text string and press the **OK** button.

9. Multiple Intervals

SeaStar has the option for setting up more than one sampling interval within a measurement sequence. Reasons for wanting multiple intervals can be to save memory, but still be able to have frequent measurements in between.

By choosing the **Settings** menu and **Multiple Intervals** command, multiple interval setup is activated. Thereafter, choose the **Edit** menu and **New Measurement Sequence Definition** command. The following dialog box appears:

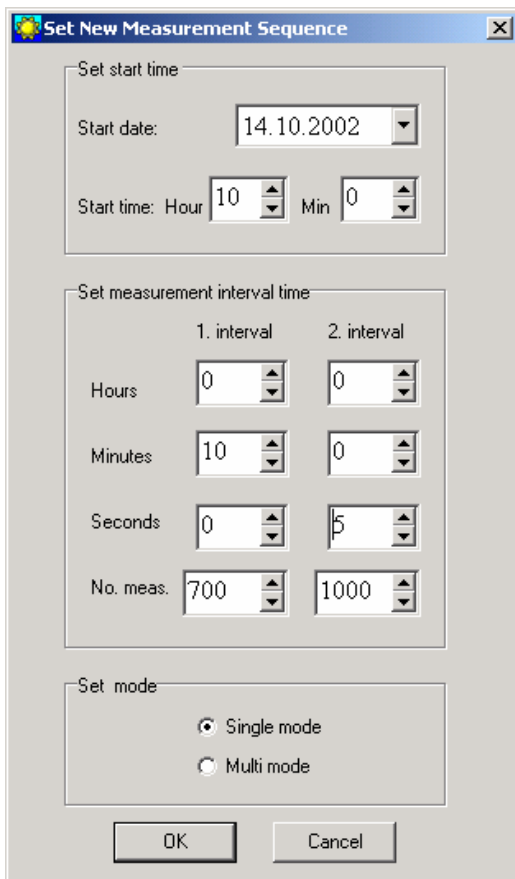


Fig. 9.1 Multiple interval selection

Start time

The user defines the date and time when recordings should start.

Measurement interval

The first and the second interval is defined. Number of measurements must be defined within each interval. The recorder will first take the defined number of recordings within the first interval, and then shift to the second interval to record the defined number of recordings for that interval. The recordings will shift between two intervals and continue until memory is filled or connection with recorder is established.

Set mode

The option for 'Multi mode' is to enable the user to fix the settings, in case many recorders are being programmed with the same settings. When the 'Multi mode' option has been selected, the same settings will automatically be downloaded into the following recorders that connection is made with.

10. Reconvert Data

In *SeaStar* you have the option of reconvert data that has already been retrieved. After re-defining parameters, the data is reconverted by 'File – Reconvert Data'. The main reasons for reconvert data are:

- Incorrect PC-time at measurement start-time.
- Need for temperature unit alteration.
- Need for data file format alteration.

By choosing the **Edit** menu and **Reconvert Data Definition**, a dialog box appears:

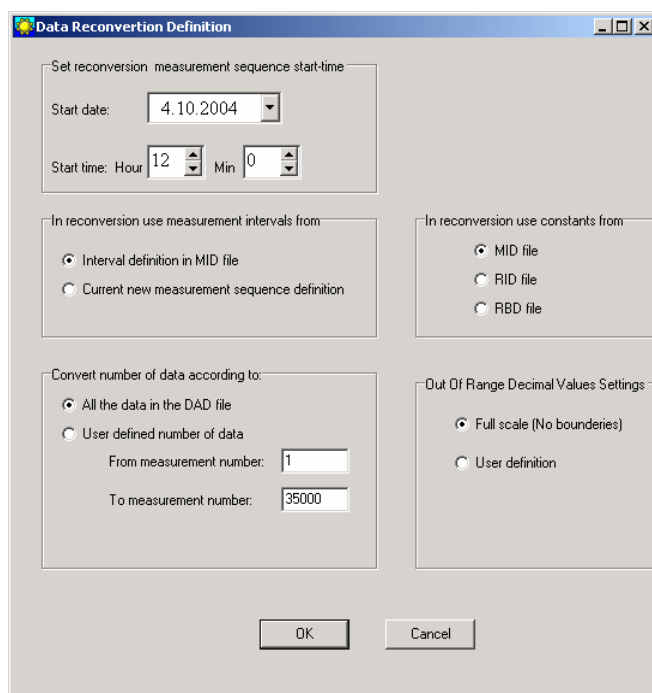


Figure 10.1 Reconvert data definition

Set reversion measurement sequence start-time

If the user notifies from retrieved data that the date and clock are incorrect at the start of measurements, then it is possible here to specify a new start date and time.

In reversion definition use measurement intervals from

The measurement interval is either the interval settings as shown in the measurement (MID) file, or if that interval is incorrect, a new and correct sampling interval is specified in the 'New Measurement Sequence Definition' command in the 'Edit' menu.

Convert number of data according to

You can reconvert all the data in the last measurement sequence, or you can define the number of measurements to be reconverted. The user has the option to define what measurement range should be reconverted (for example to exclude data points when the recorder was above water).

Using the **Settings** menu and **Preferences**, you can also change the format of the temperature unit and the data file.

For reconvertting the data, the data file must be open. To start reconvertting data according to the new settings, choose the **File** menu and the **Reconvert Data** command. The data file is reconverted and conversion data files are created (CIT, DAB, DAT). A new chart file is now open.

11. Recorder Modes

In this chapter, we describe the three operational modes of *Starmon 3-D tilt*, that is the PC Mode, Sleep Mode and Measurement Mode.

PC Mode

If the recorder is plugged into a PC computer with the communication cable, by choosing the **Recorder** menu and the **Connect** command, the recorder is put into PC Mode. At the bottom of the SeaStar window, the text **On-line** is displayed, indicating that the recorder is on-line and in PC Mode.

While in PC Mode, the recorder will remain in an active listening stage. The communication protocol is a simple master/slave arrangement, in which the recorder is the slave. The slave will perform every command the PC issues, and after execution of a command, it will return to listening.

Sleep Mode

The user receives the recorder in Sleep Mode, but it can easily be awakened by the **Connect** command in the **Recorder menu**. The recorder is put into Sleep Mode when the recorder is disconnected without putting it into Measurement Mode or by choosing the **Recorder** menu and then **Put Recorder in Sleep Mode**. When the recorder is in this mode, less power is depleted from the battery than in other modes.

Measurement Mode

The recorder is put into Measurement Mode by choosing the **Recorder** menu, and **Start New Measurements Sequence**. The recorder starts recording measurements according to the start time (date/month/year) and sampling interval (hours/min.) defined by the user.

When the memory is full, the recorder shifts automatically into Sleep Mode. Upon connection and command from the PC, the recorder is put into PC Mode.

12. Memory Organization

The data in *Starmon 3-D tilt* is kept in an EEPROM memory and will not be lost if the battery fails or expires. The memory of the recorder is organized as shown in the figure below:

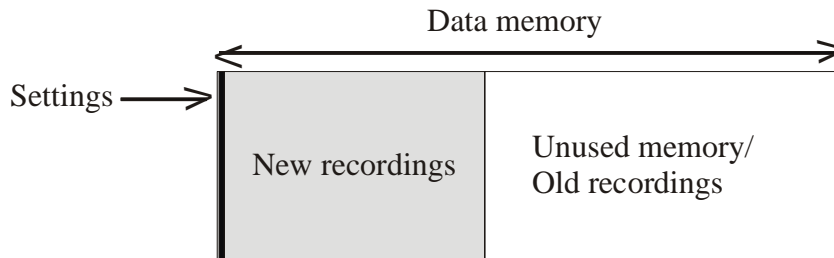


Figure 12.1 Data memory organization

When data is retrieved from the recorder, the following occurs:

1. The computer retrieves the data from the recorder and writes the data to the computer's hard drive .
2. The recorder has stopped recording, but still holds the recorded data.

When new settings are sent to the recorder, the following will occur:

1. New settings are sent to the recorder.
2. The data memory pointer is reset to the beginning of the data memory and starts to write over older recordings.

The organization of the memory is now as follows:

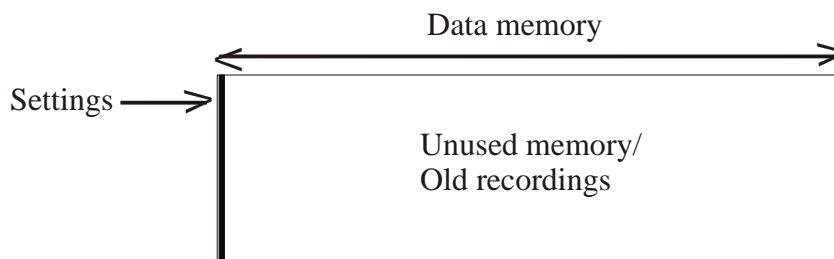


Figure 12.2 Data memory with new settings

measurement related files created by *SeaStar*, are placed in the appropriate recorder's directory. For example:

C:\SeaStar\Starmon 3-D tilt\Z0801\ is a directory for the Z0801 recorder and all files belonging to Z0801 are placed there.

If the user wishes to use his own defined data path, for example C:\Data\, then all the files for all the recorders, except for the INI files, are placed there. If the user has enabled the "Create recorder directories" in the user path definition, individual recorder directories, irrelative of type, are created under the user defined path, for example: C:\DATA\Z0801\ for the Z0801 recorder. The Z0801.ini file (located in the C:\SeaStar\Starmon 3-D tilt\ directory) contains the path to the C:\DATA\Z0801\ directory, and all files related to the Z0801 recorder will be placed in that particular directory.

Browsing for a recorder

When browsing for a new recorder from the 'Select recorder' under the files menu, the default method is to find a recorder-INI file in the type directory. The INI file will then point to the data directory (the recorder's directory). If the user has enabled the "Browse first in the user directory" in the user path definitions, the search starts in the user defined directory, where a *.RID file must be selected.

Recorder related files

Every file for *Starmon 3-D tilt* that is recorder related has the following name format: **Zxxxx** - The name is the recorder ID (serial no.)

<u>Ext</u>	<u>Description</u>	<u>File type</u>
RID	Recorder information data	Binary
RIT	Recorder information text	Text
RBD	Recorder backup data	Binary
RDD	Recorder SNMS* download information data	Binary
RDT	Recorder SNMS download information text	Text

The recorder ID (RIT) can at a later time be opened, and the related measurement data can be viewed, printed and reconverted. The RDD, RDT and DIR are download information files, created when a new measurement sequence is started.

Measurement related files

Every file that is specifically measurement related has the following name format: **mmmZxxxx** - The name is the measurement number + serial no.

<u>Ext</u>	<u>Description</u>	<u>File type</u>
MID	Measurement information data	Binary
MIT	Measurement information text	Text
MDD	Measurement download information data	Binary
MDT	Measurement download information text	Text
CIT	Measurement conversion information text	Text
DAD	Measurement Data Binary file	Binary
DAB	Measurement Data Binary file	Text
DAT	Measurement converted data	Text

* SNMS: Start New Measurement Sequence

The MID, MIT and DAD files are created upon measurement data retrieval from the recorder. The DAB, DAT and CIT files are created when converting the data. The MDD and MDT are download information files and created when a new measurement sequence is started.

Data files

Upon data retrieval, three main data files are created.

The *.DAD file

This file is the raw data source file. The data is in mixed binary form. The user cannot access this file in the *SeaStar* program. When converting these raw data into measurements, the *.MID file is needed. The result from the conversion are two data files, the *.DAB and the *.DAT.

The *.DAB file

This file contains sequential binary representation of the data in columns. The first column is the measurement number. The other columns contain the measured parameters in a binary form.

The *.DAT file

This is the actual result file, where the measurements are converted to their natural units and timed. This is a text file with columns. The first column is the measurement number, the second column the date and the time, depending on the set-up. The third column is the time or the first measured parameter, depending on set-up. The following column(s) contain the converted measured parameters with units and number of decimals according to set-up. Number of parameters can range from 1-3, and number of columns 3-6 accordingly.

Data header

The *.DAT file contains a data header, which is a detailed description of how the *.DAT file is configured. This feature is used by *SeaStar* when graphically representing the data, and is practical if the user wants to import the data into other applications or databases. Most of these descriptive items are derived from the 'Settings' menu and the recorder type definition in the 'File' menu.

Each header item is contained in one line, and all header lines start with a # (bookmark) and a number. Then follows a description of the header item, and then 1-4 directives, all separated by tabs. Eventually a comment trails the directives, preceded by a semicolon (;).

The following is a description of the directives contained in the data header.

Item Description number of directives

- #0 **Date-time:** 1**
The date and time of that particular *.DAT file creation.
- #1 **Recorder:** 1**
The recorder and sequence number, f. example 12Z0801.
Used for confirmation and as a graph header.
- #2 **File type:** 1**
Describes file column structure, mainly if Date and Time are joined (0-3).
0: Result file Number Date Time Channels 1-3
1: Result file Number Date & Time Channels 1-3
2: Binary file Number Binary Channels 1-3
- #3 **Columns:** 1**
Total number of columns (3-6).
- #4 **Channels:** 1**
Number of measurement parameters (1-3).
- #5 **Field separation:** 1**
Separation between columns (0,1).
0: Tab
1: space
- #6 **Decimal point:** 1**
(0,1)
0: Comma
1: Dot
- #7 **Date def.:** 1**
Date format (0,1)
0: dd mm yy
1: mm dd yy
- #8 **Time def.:** 1**
Time separation (0,1)
0: Colon (:)
1: Dot (.)
- #9 **Channel 1:** 4**
Set as left axis, normally temperature. The four directives are:
Axis header, unit: Text
Column header, unit: Text
Number of decimals: (0-3)
Axis direction (1,2)
 1: Ascending
 2: Descending
- #10 **Channel 2:** 4**
Set as right axis, normally pressure. The four directives are:
Axis header, unit: Text
Column header, unit: Text
Number of decimals: (0-3)
Axis direction (1,2)
 1: Ascending

2: Descending

#11 Re-conversion: 1

Definition on conversion / Extra header in graph (0,1)

0: Original conversion

1: Reconverted

#12 No temperature correction: 1

Only in re-conversion, temperature correction in pressure calculations, is used as extra header information (0,1).

0: Normal correction

1: Correction was disabled

#13 Pressure offset correction: 2

In pressure calculation, a zero offset can be adjusted. The two directives are:

Applied: (0,1)

0: No adjustment was made

1: A zero offset was adjusted.

Adjustment value: An integer value in mbar

#14 Channel 3: 4

Set as extra right axis, normally salinity. The four directives are:

Axis header, unit: Text

Column header, unit: Text

Number of decimals: (0-3)

Axis direction (1,2)

1: Ascending

2: Descending

Troubleshooting

Connecting to the recorder

In order to be able to communicate with the recorder, the cable must be connected to the correct COM port, as indicated in SeaStar.

Communication errors

1. If using a laptop, please make sure that the power cable/DC power supply are located as far as possible away from the communication cable.
2. Make sure that no electrical devices/power sources are close to the communication cable.
3. If a 'Device Error' is reported upon connection, please check if the SeaStar program has been opened more than once. This error can also occur if a different program is open, and is using the same communication port as SeaStar.

CRC error

The CRC test is a safety check performed by the software when retrieving the Recorder Information Data (RID). The CRC is

a register in the RID file, which is calculated and placed in the recorder's RID, when starting up a new measurement sequence. When retrieving the RID from the recorder, SeaStar calculates the CRC from the retrieved data, and matches it against the recorder's CRC register. If they do not match, a CRC error is reported.

The reason why a CRC error occurs, is most likely due to bad communication condition. Check the point above, under 'Communication errors'.

It is possible to disable the CRC check while connecting. This is done under 'Settings – Connection'. Normally, the CRC should not be disabled, but the following scenarios are an exception, where CRC check can be disabled:

- a) Communication error occurred while initiating a new measurement sequence.
- b) A communication error occurred after data retrieval, while updating status in the recorder.
- c) A communication error occurred while putting the recorder to sleep.
- d) A communication error occurred while updating status in the recorder upon a POR (Power On Reset) error detection. When connecting to the recorder and POR error is detected, a new status is initiated in the recorder and the RAM data is reset.

- e) Repeated CRC error occurs, and the above does not apply/has been checked. This may though produce errors in the RID file, which again may produce errors in the conversion of data.

Disable CRC check

In case of persistent CRC check error, the CRC check must be disabled:

1. Go to 'Settings – Connection', and disable the 'Perform CRC test when retrieving RID'.
2. Try connect to the recorder 'Recorder – Connect'.
3. If connection is OK, then examine the RIT file for possible error. These possible errors may manifest themselves as a very high ($>E20$), or very low ($<E-20$) calibration constants. Other errors may be abnormal times/dates and abnormally high measurement sequence number in the RIT file. Usually SeaStar will come up with a warning if the calibration constants or time/date is not normal. If the RIT shows signs of these error, please request record backup file (RBD) from Star-Oddi.
4. If the recorder has been measuring data, try to retrieve the data 'Recorder – Retrieve Data'. If data can not be retrieved there is fault with the PC com port, the communication cable or the recorder. If data retrieval was ok, continue to step 5.
5. Make a short measurement test and start the recorder in a new measurement sequence 'Recorder – Start New Measurement Sequence'.
6. Enable the CRC check 'Settings – Connection'.
7. Connect to the recorder after the short measurement test, 'Recorder – Connect'. If a communication/CRC error occurs, then there is fault with the PC com port, the communication cable or the recorder. Contact Star-Oddi.
8. Retrieve data from the short test 'Recorder – Retrieve Data'. Analyse the data, and verify that the values are correct.

Starting the recorder in a new measurement sequence

Communication errors

1. Timeout on command echo (no response from recorder).
Check if the cable is properly connected the PC COM port and the recorder.
2. Other communication errors.
Other communications problems can occur, but the recorder is still on-line. The user is prompted to try starting the recorder again in a new measurement sequence. If instead, the user chooses to connect to the recorder again, a CRC error will most likely occur. In that case, the user should disable the CRC check (Settings – Connection).

Retrieving data from the recorder

Communication errors

1. Timeout on command echo.
There is no response from recorder. The recorder is off-line. Please try to connect again.
2. Other communication errors while retrieving data.
The result of the retrieval can be viewed in the .MIT file. Usually, if the communication is in order, and all the data is retrieved correctly, SeaStar will automatically convert the data from the decimal values (.DAD), to the unit values (*.DAT). If this is not the case, then SeaStar may drop the conversion part, and it is up to the user, to either retrieve the data again, or manually re-convert the data, depending on the status of the retrieval. If a communication error occurs in the middle of data retrieval, the recorder becomes off-line. The user must connect to the recorder again, and retrieve the data again.
3. Communication errors while updating recorder status.
In the event when communication error occurs while updating the status in the recorder, i.e. after retrieving the data, the CRC register in the recorder is probably corrupt. Thus when connecting again to the recorder, a CRC error will likely occur. In this case, the CRC check should be disabled, as described earlier in the "Troubleshooting".

Graph and data table not displayed

If the software has not been installed from the CD, and only the 'seastar.exe' file is running, the graph and data table will not appear. This may be the case when the user has a new computer, and gets the latest version of SeaStar from Star-Oddi, runs only the 'seastar.exe' file, and has not previously installed SeaStar from the CD. The software must be installed from the CD (by running the 'setup.exe' file), because it installs the package for creating the graphs and tables. The 'seastar.exe' file can be updated later with a new 'seastar.exe' file.

When data is retrieved using the 'seastar.exe' file only, the data is retrieved OK, although the graph and table will not display. The data can be opened in Excel, or viewed after installing the software from the CD.