



Simple implantation method prevents abdominal migration of data loggers and reduces discomfort



Researchers at the [Biomedical Primate Research Centre \(BPRC\)](#) in the Netherlands have developed a simple method to prevent the abdominal migration of data loggers. As the surface of the housing on the Star-Oddi loggers is very smooth the researchers found that there isn't much obstacle for the loggers to travel through the abdomen. This makes it more difficult to retrieve the loggers with increased discomfort for the animal.

The method involves spinning a knot of non-resorbable suture material with a needle around the logger, and the needle is then used to attach the logger to the abdominal wall while closing the wound. This method was used in study where 12 cynomolgus monkeys were implanted with [Star-Oddi's DST micro-T temperature loggers](#). Five months later, at the end of the study, the loggers were removed. The researchers found that the loggers were still attached to the abdominal wall which made the retrieval surgery much easier and only caused a minor discomfort to the animals. Also the implantation had no effect on the monkeys' health which was checked daily.

For more information please see the BPRC research poster [here](#).



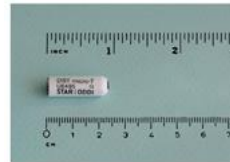
Recommended implantation methods for Star-Oddi data loggers

We are often asked for recommendations on how to implant our data loggers, both subcutaneously and abdominally. Literature on validated implantation methods is available for researchers. For more information, [please contact us](#).

Star-Oddi's loggers used to study the causes of obesity - loggers administered orally to measure core temperature

Researchers at the [School of Animal and Veterinary Sciences](#) at the University of Adelaide in South Australia have conducted a study where they have tried to decipher the reasons why some people are more prone to obesity than others. The study was based on two hypotheses: The first that the core body temperature, which affects metabolism and the energy used to thermoregulate the body, differs in obesity-prone people on the one hand and obesity-resistant on the other. The second hypothesis that the researchers put forward is that obesity prone people show less variety in circadian rhythms.

To test their theories, the reserachers used two breeds of dogs; greyhounds that have been observed to be resistant to obesity and labradors that are more prone to be overweight. A total of 29 dogs, 9 greyhounds and 10 labradors were used in the study. An innovative method was used to measure the core temperature of the dogs. The dogs were fed [Star-Oddi's DST micro-T temperature loggers](#) which they swallowed without any damage to neither the dogs nor the loggers. The loggers were programmed to take temperature measurements every 10 minutes while travelling through the dogs' intestines. The average time of the transit was about 30 hours and all loggers were successfully retrieved from the faeces afterwards.



The research showed that there was little difference between the core temperature in both breeds, although slightly higher in the greyhounds, which is consistent with similar studies in humans. The labradors did however show less variety in circadian rhythms as the hypothesis suggested.

Please click [here](#) to read the whole study.

Published research using our temperature loggers



We would like to point out the extensive collection of scientific papers and posters using our sensors in various types of biomedical research which can be found on our website. To view the research, please click on the following [link](#).

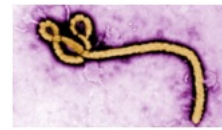


Star-Oddi Online

Now you can find product updates, video tutorials and general information about Star-Oddi on:



Star-Oddi loggers for vaccine research –



Our loggers h: number of vac diseases publ biomed resear worldwide for their accuracy minimum-inva

development against the Ebola virus we wel researchers fighting this deadly threat. With temperature implants we hope to contribute Ebola.

[Research articles](#) on vaccine and infectious

Star-Oddi takes part in the ALS Ice Buck



Our sales manager, Sni take part in the ALS Ice recruited the help of the team who were more th can be seen on this [link](#)

Click [here](#) to support Al Click [here](#) to support th association

Earthquakes and eruptions in Ice glacier - See it live



Iceland is once again dynamic geological ar

In mid-august the Bar north-west part of Vat by a swarm of earthq magnitude as 5.3 on 1 August 29 lava begun in the Holuhraun lava about 15km north-eas fissure reached about the eruption only laste four hours.

Two days later, on August 31st, a second fis in Holuhraun. This eruption is much bigger t still ongoing at the moment with lava coverir kilometers. On September 5th two new fissu one of them has now ceased erupting.

This part of Iceland is very remote and uninhabited. The area is however popular with tourists, but it has been closed off for traffic. Only scientists and news reporters have been allowed to enter with limited access. The area has had to be evacuated a few times when large con have reached dangerous levels.



Click on the following link to view a live web Bardarbunga: <http://www.livefromiceland.is/2/>

[Here](#) you can also see an amazing video of quadcopter.

Data Storage Tags-DSTs

Star-Oddi has been manufacturing and deve 1993. The data loggers are used for various studies. You can find our whole product rang sensors are available: